

LD 8177 – Innovative, filigree niche system

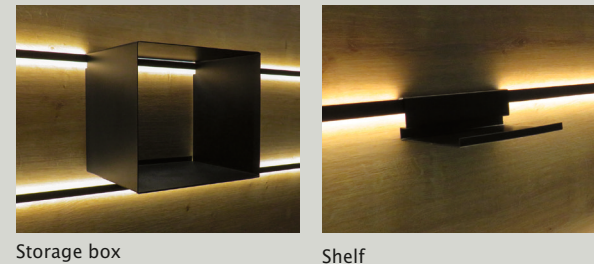
The versatile lighting concept is based on a minimalist design with minimal use of materials. Optional shelf and storage elements complement the system and enhance every kitchen niche both functionally and visually.

The system consists of:

- A) Light profile for top edge
- B) Light profile for horizontal installation between 16mm rear wall panels with hook-in groove for additional/ shelf elements
- C) Light profile for horizontal or vertical installation between 16mm rear wall panels (the rear wall requires a panel thickness of 16mm!)
 - 24V
 - Black aluminum profiles
 - Customised lengths, max. 3200mm
 - SMD-TWIN LED, 4mm
 - Light colour MIX 2700–6400K
 - Connection lead ESP 2-pole
 - Protection class III

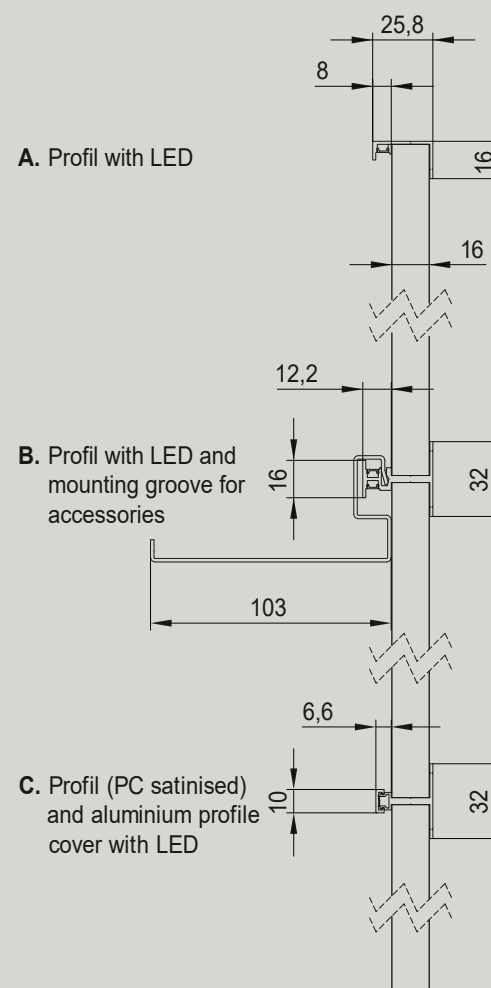
Accessories on request:

Storage box, roll holder, towel holder, 4-hook rail, shelf 300mm, shelf 600mm

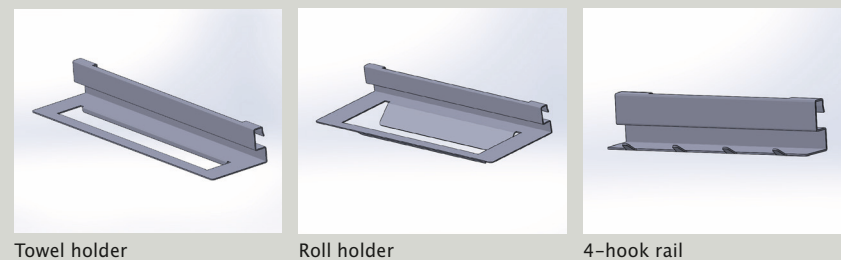


Storage box

Shelf



05/2025 Technical modifications reserved



Towel holder

Roll holder

4-hook rail



Everything starts with Light.

When light changes rooms.

Kitchen, where lighting meets function.

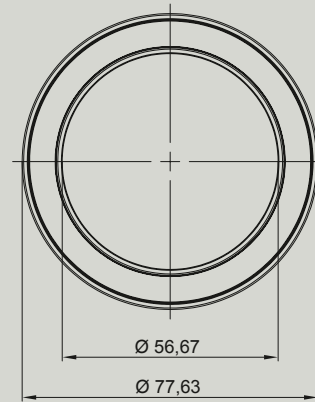


LD 8228 - Spotlight in ring shape

Surface-mounted luminaire in a minimalist ring shape for lighting and accentuating living room furniture, kitchens and shelving. Available light colour MIX 2700-6400K or monochrome 3000K and 4000K.

The luminaire is also available as an industrial version with invisible lead routing in the furniture.

- 24V
- 2-pole
- 3.3W MIX
- 4.3W monochrom
- CRI >90
- Dimmable
- Protection class III
- IP20



Innovative solutions for the kitchen

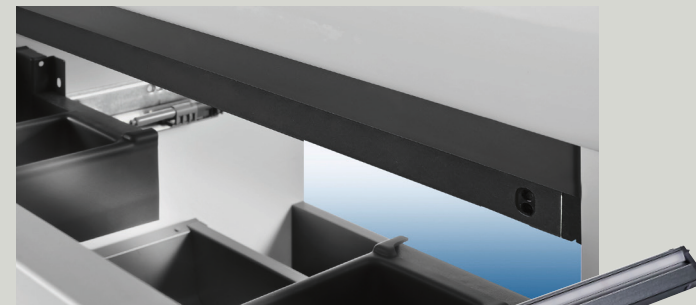
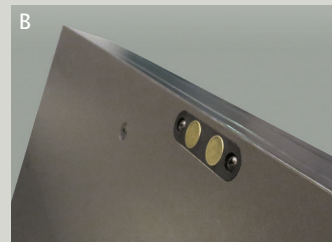


Spring-loaded contact switch

A consistent, continuous under-cabinet lighting strip for the kitchen is now also possible for the dishwasher. While traditional lighting systems for large hinged devices reach their limits, this solution provides a remedy. Finally, consistent lighting in areas that were previously unlit.

- 24V
- Spring contact (A) on the machine side with 2000mm cable and JMT white plug
- Contact element (B) on the door side with 200mm lead and wire end ferrules

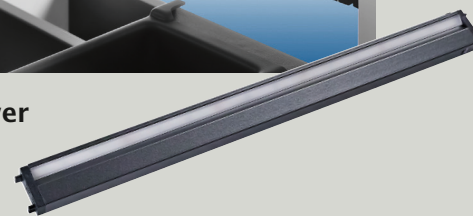
NOTE: Versions with ESP connector system will follow in Q2 2025!



LD 8132 - drawer luminaire

Lighting profile for a good and functional illumination of drawers. Equipped with an integrated infrared sensor and a gentle soft start effect for automatic lighting when the drawer is opened. Easy installation with brackets and contacts, where the light is simply clicked in.

- 24V
- Profile aluminum anthracite
- SMD-LED, 4mm
- Output 9,6W/m
- Light colour 4000K
- Connection lead with ESP plug
- Protection class III



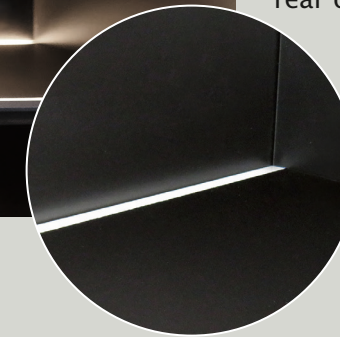
Living space, where lighting creates emotions.



LD 8190 Shelf lighting

New ambient lighting for cabinets, display cabinets and shelves of 19mm thickness. Subtle, atmospheric light in the rear compartment, especially suitable for the living area and glass cabinets. The leads can be routed directly to the rear of the furniture.

- Ideal for living room furniture, shelves and glass cabinets
- Favourable and technically clever solution for furniture manufacturer



LD 8180 - Profile handle light for 19mm shelves

Illuminated handle strip light "Up & Down" in high-quality, filigree aluminium with functional LED technology. For simultaneous lighting of glass wall cabinets and niches or for one-sided lighting upwards or downwards.

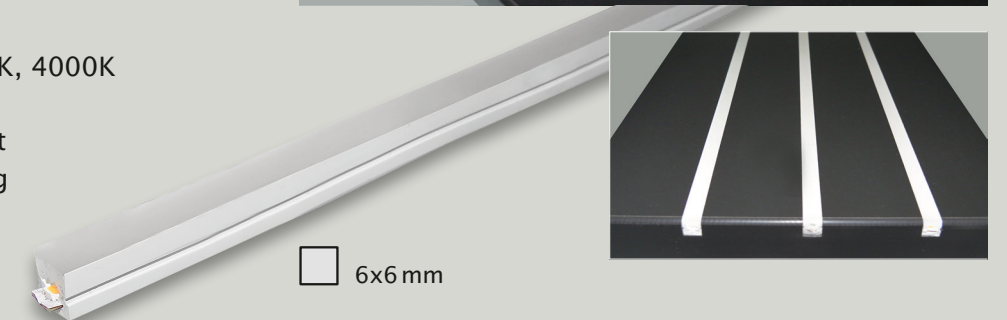
- Modern, high-quality design
- 4mm LED-Strip
- Illumination on both sides upwards/downwards or one-sided
- Can be used horizontally or vertically



Mini Neon LED Light

Create effective lines of light and set eye-catching accents with this recessed flex strip light. Easy installation, thick silicone coating, bending from above and free cutting. Completely flush with the surface! A great solution for furniture, shop fitting and interior design.

- 24V
- 6 x 6mm
- 9,6W/m
- Light colours 2700K, 3000K, 4000K
- Free separability
- Clamp mounting in cut-out
- Connection lead depending on application



6x6 mm