

LD 8104 A

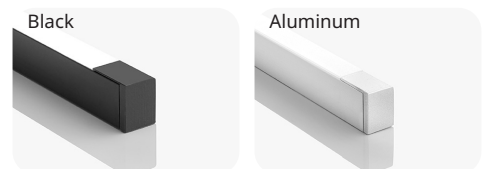
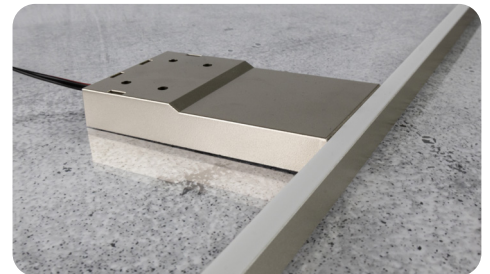
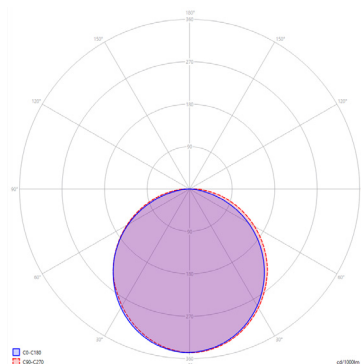
LIGHTING THAT SUPPORTS EVERYDAY LIFE

The LD 8104 A is a well-designed mirror light that harmonises form and function. It provides clear, even illumination in bathrooms and around furniture, and blends seamlessly into a variety of interior designs. Thanks to its flexible design and adjustable light colour, it is suitable for a wide range of applications and ensures reliable lighting conditions for everyday use.

PRODUCT FEATURES

Operating voltage	24 V
Housing	Aluminum, Plastic
Diffusor	Opal white
Power	See chart
LED type	SMD
Light colour	See chart
Luminous flux	See chart
CRI	>90
Dimmable	Yes
Connection cable	4000 K: 2-pole, 1800 mm 2700-6400 K: 2-pole, 1700 mm
Connection system	ESP
Mounting	Screw-on
Protection	IP 44
Protection class	III

LIGHT DISTRIBUTION



PRODUCTS

Art. No.	Power (W)	Light colour (K)	Colour	Width (mm)	Lumen (lm)
539 879 01	4,8	2700-6400	Black	500	n/a
539 879 02	6,8	2700-6400	Black	700	n/a
539 879 51	4,8	2700-6400	Stainless steel/matte nickel	500	n/a
539 879 52	6,8	2700-6400	Stainless steel/matte nickel	700	n/a
539 951 11	5,3	4000	Black	300	64
539 951 13	9,2	4000	Black	500	102
539 951 14	13,0	4000	Black	700	138

Variant with 2 arms

539 879 03	7,7	2700-6400	Black	800	n/a
539 879 04	8,7	2700-6400	Black	900	n/a
539 879 05	10,6	2700-6400	Black	1100	n/a
539 879 53	7,7	2700-6400	Stainless steel/matte nickel	800	n/a
539 879 54	8,7	2700-6400	Stainless steel/matte nickel	900	n/a
539 879 55	10,6	2700-6400	Stainless steel/matte nickel	1100	n/a

DIMENSIONS

