



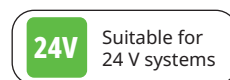
LD 8142-24

COMPACT DESIGN. EASY TO OPERATE

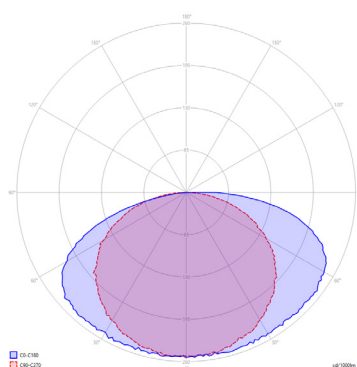
The LD 8142 is a compact surface-mounted luminaire designed for use in furniture and interior design. It has been developed for applications where light needs to be precisely directed and reliably available – either with integrated switching and dimming functions or as a simple luminaire without any control elements.

PRODUCT FEATURES

Operating voltage	24 V
Housing	Plastic
Diffuser	Opal white
Power	3,0 W
LED type	COB
Light colour	4000 K Other light colors available on request
Luminous flux	See chart
CRI	>90
Dimmable	Yes
Connection cable	2-pole, 2000 mm
Connection system	ESP
Mounting	Screw-on
Protection	IP 20
Protection class	III



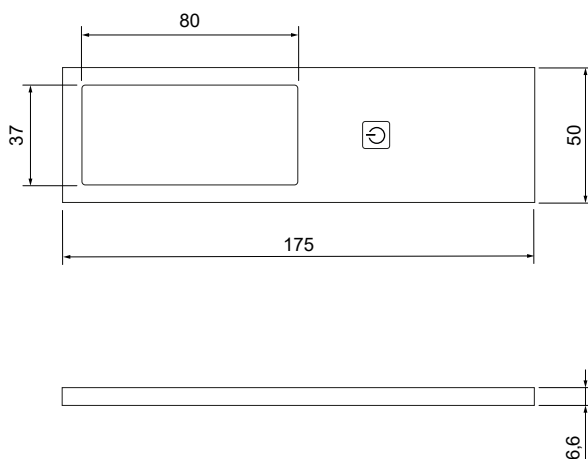
LIGHT DISTRIBUTION



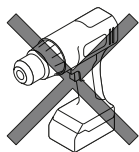
PRODUCTS

Art. No.	Power (W)	Light colour (K)	Colour	Switch	Lumen (lm)
53047404	3,0	4000	Black, brushed	Yes	238
53047504			Black, brushed	No	
53047405			Aluminum	Yes	
53047505			Aluminum	No	

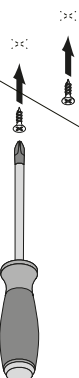
DIMENSIONS



MOUNTING



1.



2.

